



COOPERHEAT

# HEAT TREATMENT SERVICES

LEADING INNOVATORS IN THERMAL TECHNOLOGY  
TO THE OIL & GAS, CHEMICAL AND POWER INDUSTRIES

[www.stork.com/cooperheat](http://www.stork.com/cooperheat)

Cooperheat is a Stork brand

# HEAT TREATMENT

Cooperheat provides a full range of heat treatment services onsite or at our facilities. With global resources including more than 1,000 sets of electrical heat treatment equipment, 50 gas and oil burner sets and more than 400 experienced heat treatment technicians, Cooperheat is a leading innovator in thermal technology to the Oil & Gas, Chemical & Power industries.



## HISTORY

**The heat treatment of metals has been practised in various forms for many centuries. Initially heat treatment was used to enhance the properties of raw iron for tools and weapons. The heat treatment process produced excellent combination of toughness and flexibility in blades, combined with a very hard cutting edge using only the most basic of forges, though operated by highly experienced craftsmen.**

Heat treatment is a method of altering the physical and sometimes chemical properties of metals and essentially can be defined as the controlled heating and cooling of a metal or metal alloy, in its solid state, to produce certain changes in its properties. The heat treatment is generally designed to leave the steel free from harmful, unevenly distributed internal stresses, yet leaving it hard and tough enough to be serviceable. It removes the external brittle micro structures that follow quenching and restores toughness and ductility, according to the temperatures adopted.

## A REPUTATION BUILT ON EXPERTISE AND EXPERIENCE

Cooperheat has established a reputation in thermal technology design and engineering excellence for petrochemical, chemical, oil and gas and power industries. Our global footprint has generated a wealth of experience and today an international network of operations makes Cooperheat the world's largest specialist heat treatment company. Located in the UK, Netherlands, Saudi Arabia, UAE, Australia, New Zealand and South East Asia, Cooperheat offers a complete range of heat treatment project services which add value and deliver clients the following benefits:

- Improved structural integrity of plant and asset life
- Reduced costs
- Customised service configurations to meet client specific requirements
- Global resources ensure rapid response to challenges with fast and effective services
- Turnkey service for a full range of fully engineered heat treatment services and solutions
- Access to in-house experts and experienced heat treatment engineers and technicians

Cooperheat is committed to quality onsite services which have developed the company a well-earned reputation built on the highest safety, quality and technical expertise.





# INDUSTRY CHALLENGES

Cooperheat's experienced team of designers and engineers are dedicated to solving thermal technology challenges anywhere in the world. Whether it is through unique product designs or onsite procedures and project management, these experts work to the highest possible disciplines of quality and technology to ensure that problems are solved and challenges overcome quickly, calmly, efficiently and cost effectively.

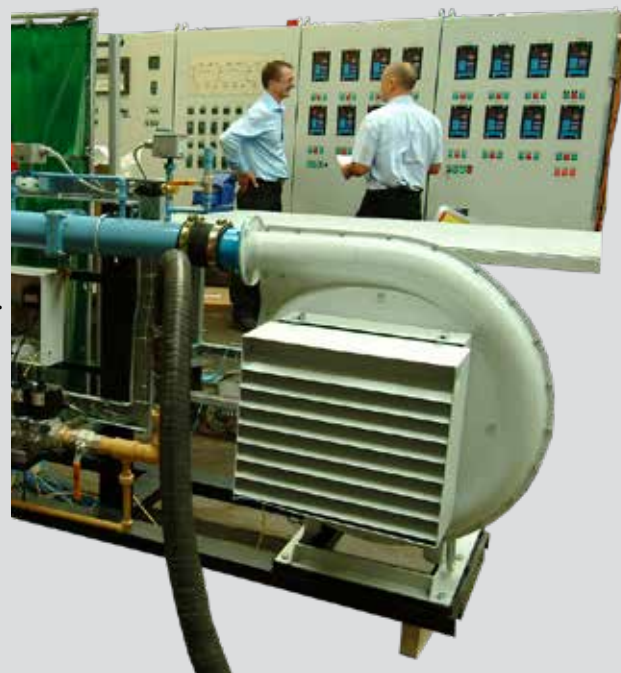
With the ability to respond at short notice, Cooperheat adopts a total service approach ensuring optimum results. This commitment and dedication, based on many years of practical expertise, has ensured that Cooperheat continues to lead in the field as innovators in thermal technology and total service providers.

## INDUSTRY CHALLENGES TODAY

It is vital in industry today to respond quickly to any heat treatment challenges. Heat Treatment requirements can lead to loss of operational capacity which can be costly therefore a fast and effective heat treatment specialist to deliver solutions and avoid such costs is essential. Positive analysis and effective recommendations are required prior to onsite operations. Cooperheat's experts produce a feasibility study based on the information provided and data gained from site visits. Practical possibilities are examined for suitability before submitting recommended courses of action for final consideration by the company. Such feasibility studies can also detail labour planning and costs as well as financial planning linked to the time constraints within the operation.

The length of time required for feasibility studies depends on the complexity of the requirement; however Cooperheat's ability to respond quickly to heat treatment challenges and questions is recognised worldwide. Once the most suitable technical option has been determined, Cooperheat deliver a cost effective and safe, procedure and equipment selection to quickly implement the required solution.

With six decades of global experience, Cooperheat can instantly mobilize personnel, equipment resources and engineering support anywhere in the world.



*Furnace control panel and burner manufacture*

## TWO SINGLE MOST COMMON FORMS OF HEAT TREATMENT

### PREHEAT

Preheat is the term associated with the application of heat to a metal component prior to and during welding.

There are a number of reasons that preheat may be required, including reduction of residual stresses after the component has been welded, and minimising absorption of Hydrogen into the weld during welding.

Preheat temperatures are generally relatively low, ranging typically from 50°C up to 250°C.

### POST WELD HEAT TREATMENT

Post Weld Heat Treatment (PWHT) is the term used to describe the heating of an entire weld to a temperature high enough to reduce the residual stresses within the weld. PWHT temperatures are typically in the range of 600 – 700°C.

There are a variety of application methods for heat to weld geometries in order to achieve the desired temperature, ranging from locally applied electrical heaters, to larger gas fired furnaces. The method used is usually determined by the fabrication geometry, size, access restrictions and site constraints.



*Demonstration of Heat Treatment set up*

# PROJECT MANAGEMENT

## OTHER COMMON TYPES OF HEAT TREATMENT:

### HYDROGEN BAKE OUT

Also commonly referred to as Post Heat, a Hydrogen bake out is normally carried out immediately after welding is complete, and at temperatures in the region 350-400°C. As the name suggests, the process is used to promote the release of hydrogen from the weld metal, which under certain conditions can cause 'Hydrogen Cracking'.

### ANNEALING

Full Annealing is the process that involves heating steels above their 'transformation' temperature and cooling very slowly, which results in the softening of the steel, to make it more suitable for working with.

### STRESS RELIEVING

Stress relief is a term commonly used to refer to Post Weld Heat Treatment; however, it should always be qualified further, as most heat treatments have the effect of reducing stresses.

### NORMALISING

Normalising is a similar process to annealing, except that after heating to the desired temperature (commonly around 900°C for typical carbon steels) the steel is cooled in still air, which results in a much more rapid cooling. This has the benefits of improving the grain structure of the material following welding or cold working and reducing hardness and improving machinability of the material.

### QUENCH HARDENING

Heating a metal up to a high temperature and then rapidly cooling in still air, water or suitable oil, which results in making the metal hard.

### TEMPERING

This is a heat treatment, which follows a quenching

hardening heat treatment. Tempering will increase the toughness of the hardened metal.

### SOLUTION ANNEALING

This is most commonly applied to certain types of stainless steels, and requires temperatures in the range of 1000 - 1150°C. The process also requires rapid cooling, which for thicker materials, often requires water quenching. The process generally returns the material back to its original design properties and improves corrosion resistance following welding.

### EXPANSION HEATING

Often, especially in the turbine related industries it is necessary to remove or fit rotor ring. This can be achieved more effectively by heating the ring quickly so that the ring expands more than the shaft allowing for its removal or fitting.

## REFRACTORY DRY OUTS

The drying out of refractory linings within vessels and structures by carefully controlled heating and ventilating operations produces optimum refractory properties. Failure to do so may lead to disruption owing to steam generation and high associated costs.

Cooperheat's expertise in this area ensures maximum flexibility and minimum downtime. By using state-of-the-art equipment, including digital process controllers, fully proportional electronic fuel actuators and safety features, Cooperheat engineers provide a flexible service to meet all specifications. Moisture is carefully removed by controlled heating procedures to avoid damage to the refractory in service.

The use of high velocity gas burners allows large volumes of combusted gases to circulate throughout the structure at closely controlled temperatures.

Whether your requirement is for an overnight emergency call out for a single 6" pipe weld, a short term plant maintenance shutdown project, long term major plant construction, one off vessel or tank fabrication or a highly specialised requirement, Cooperheat will take care of all worksopes.

Ranging from heat treatment services to the full management of full turnkey projects that include Cooperheat's full range of specialist services, for example scaffolding, inspection, cathodic protection rope access and more. Cooperheat truly are the one stop shop for heat treatment services.

## TURNKEY AND PROJECT MANAGEMENT

Providing a wide range of technical disciplines as well as the highest level of safety and quality assurance has always been at the core of Cooperheat's heat treatment services. By simply mobilising technicians and equipment or, delivering full scale project management teams anywhere in the world, Cooperheat can provide a total range of services on site, supplying supervisory staff whilst utilising using local labour for the majority of the work.

Cooperheat's project management resources provides full design, management and services for complete turnkey heat treatment projects; ranging from heat treatment of oil platform legs in the North Sea through to varied projects on the Indian Sub-Continent. A controlled and interdisciplinary approach to all aspects of design, manufacture and installation are essential features of the Cooperheat philosophy, backed by project management teams with the expertise to weld these disciplines into a workable, cost effective package.

This has given the company a worldwide reputation for project management from initial survey through to final commissioning.

## LARGE AND COMPLEX HEAT TREATMENT PROJECTS

Cooperheat is the world leader in preheat and post weld heat treatment of all welded constructions. Fired by gas, oil or powered by electricity, Cooperheat use highly experienced and trained technicians utilising their compressive global range of automated equipment to achieve outstanding results.

Cooperheat specialise in the heat treatment of large vessels and have led the way in developing process for the internal firing of vessels and spheres. The development of internal bulk heat methods for closing seams, using a range of channel heating elements and associated channel heater power and control equipment is also available.





# DESIGN & CONSULTANCY

## DESIGN AND DEVELOPMENT

Cooperheat has maintained its position as leader in the production of specialised thermal equipment by the development of suitable equipment to enable it to meet the ever developing needs of its heat treatment services customers.

Within the development department at Cooperheat, standard items of equipment have been designed and developed, e.g. infra-red, gas panel burners, multi-channel control units, 9kVA compact heat treatment units, remote control programmers, and data recorders.

## GLASS INDUSTRY SERVICES

Cooperheat's high velocity gas burner systems provide rapid yet fully controlled and safe heat up of even the largest and most complex glass furnace structures. With our wealth of expertise and experience, Cooperheat provide a complete range of service including:

- Glass furnace heat ups
- Controlled cool downs

## CONSULTANCY SERVICES

Since Cooperheat have been resolving thermal technology challenges around the world. Thousands of companies have benefitted from this unrivalled expertise to the extent that the Cooperheat design and engineering staff are consistently working on major projects in widely varying climatic and operating conditions.

As new techniques develop, new challenges are faced. Therefore, new procedure, techniques and product development is a priority for Cooperheat in order to meet the future requirements of industry. Globally recognised as innovators in thermal technology, Cooperheat are experts within this highly specialised field and can offer the widest spectrum of consultancy services.



36 Channel Unit



Cooper K9

## CONSULTANCY

The demand for detailed engineering procedures is increasing and is essential for oil, gas, power and chemical related maintenance, fabrication and construction industries. Cooperheat can provide this consultancy either directly or as part of a larger project package, covering heat treatment and all forms of thermal technology and direct engineering consultancy. As the pioneers of on-site heat treatment services, Cooperheat has set standards for quality assurance and control and has enabled the company to offer a quality assurance service in the production of specifications, procedures and quality plans. Cooperheat can also provide advice, analysis, precautions and recommendations relating to stress points, stability and expansion in welded fabrications during the heat treatment process. The value of Cooperheat's consultancy service, which is available on a national and international basis, is recognised by industry as a whole.

## TRAINING

Cooperheat deliver operator training programmes both on site and at our global facilities. Training courses are tailored to meet particular applications and the requirement of the customer fired furnaces. The method used is usually determined by the fabrication geometry, size, access restrictions and site constraints.

Cooper 8



**Cooperheat's global portfolio of heat treatment project and engineering services are designed to overcome thermal technology challenges, both now and in the future. This includes:**

- Onsite pre and post weld heat treatment of pipe welds and all welded constructions
- Refractory Dry Out
- Glass Industry processes including warm up, cool down, furnace tapping and draining
- On-site temporary furnaces
- Hire of heat treatment equipment and technicians
- Engineering Consultancy Service in Thermal Technology, including provision of procedures, analysis, advice and drawings for thermal technology projects
- Complete turnkey and project management for heat treatment projects including design and development, on site supervision, quality assurance auditing, equipment hire, supply, site services and training

# SAFETY IS OUR A CORE VALUE

**Safety is not a priority at Cooperheat, it's our first core value. Whatever priorities we have each day, taking care of each other's safety, health and protecting the environment is central to how we do things.**

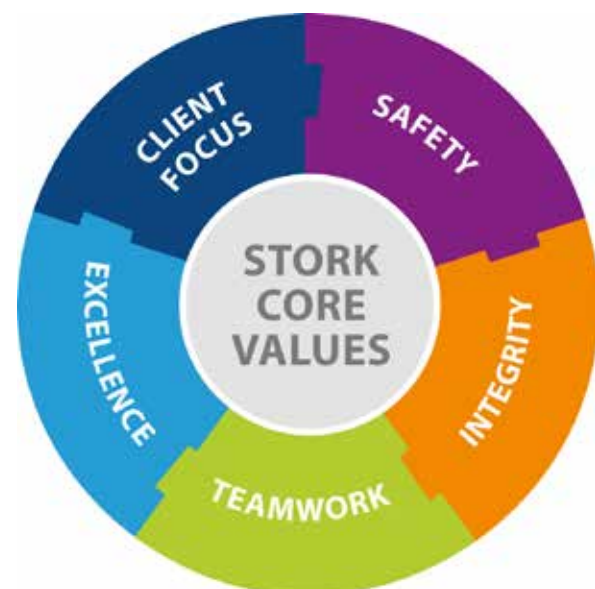
Our global HSE platform to help us turn our core value into a day-to-day reality. It is our aspirational vision for HSE. 'Zero' because we believe that incidents are not inevitable, they are preventable. By working together, we can create a future at Cooperheat that is free of incidents, because we are always pushing ourselves to go further, to continuously improve our HSE performance. There are six building blocks that help us.

#### People create safety

Recognizing that it is our behaviors and attitudes that make the difference. At Cooperheat, we have well developed behavioral safety programs, leadership training, recognition and awards to ensure we are all skilled and motivated to be safe.

#### Global standards, local ownership

Setting out our expectations for HSE across the Cooperheat business, with global consistency where it makes sense, whilst making the most of the expertise and diversity of our local teams. Global standards include our minimum safety expectations for all tasks that are described in our 10 Life-saving rules.



#### HSE intelligence

Using the experience and knowledge of our employees worldwide to help direct our HSE activities. This includes looking out for new risks in the work environment. Reporting hazards, near misses and events and analyzing these events for trends. We use leading indicators to measure the effectiveness of our risk prevention measures.

#### Adding client HSE value

As a global leader in operations and maintenance, we bring a wealth of expertise in HSE to our clients. At every client location, it is our aim to exceed our clients HSE expectations and be an active partner in improving our clients HSE performance.

#### Strong HSE function

Cooperheat has a global network of HSE professionals who support our operations teams in delivering safe operations. This global function ensures that we always have the capability to succeed in HSE.

#### Learning and innovating

Central to our HSE vision are the opportunities to apply learning from our own incidents and those that occur within wider industries. At Cooperheat, we are continuously scanning the market for innovations that may help us reduce our HSE risks.

At Cooperheat we aim to be the industry reference for HSE. Every day, everywhere.

For more information visit our website:  
[www.stork.com/cooperheat](http://www.stork.com/cooperheat)

# GLOBAL OPERATIONS



#### United Kingdom

Tel: +44 (0)1704 215600  
Fax: +44 (0) 1704 215601

#### Netherlands

Tel: +31 (0)181 417 777  
Fax: +31 (0) 181 417 252

#### UAE, Dubai

Tel: +971 (0)4 883 4370  
Fax: +971 (0)4 883 4371

#### Malaysia

Tel: +60 (0)3 334 88 280  
Fax: +60 (0)3 336 11 250

#### United States of America

Tel: +1 (281)279 1000  
Fax: +1 (281) 313 9444

#### Russia

Tel: +7 (495)775 69 19  
Fax: +7 (495) 967 76 00

#### Kuwait

Tel: +965 2 374 0172  
Fax: +965 2 374 0173

#### Australia

Tel: +61 (0)2 9609 7111  
Fax: +61 (0)2 9756 0775

#### Saudi Arabia

Tel: +966 (0)3 341 0102  
Fax: +966 (0)3 341 5170

#### New Zealand

Tel: +64 (0)6 753 6169  
Fax: +64 (0)6 753 9919

#### Qatar

Tel: +974 (0)4 499 9817  
Fax: +974 (0)4 487 9633

#### COOPERHEAT SERVICES:

cooperheat.equipment@stork.com  
[www.stork.com/cooperheat](http://www.stork.com/cooperheat)

